

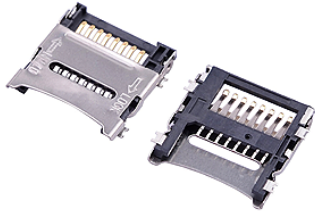
Operation: SMT& 铰链(Hinge)上掀式 T-Flash 连接器



LTEM NO.: TF-002X-H18 (Consumer Electronics)

(14.5L × 13.6W × 1.8H & T-Flash Sockets)

MEMORY-CARD-SOCKETS



Technical parameter

外焊贴装 SMT

PROJECT	LEVEL	A[better product]	B[average product]
		Electrical Properties	Contact Rating 25mA, 24V DC
Durable Performance	Initial Contact Resistance	30mΩ max.	50mΩ max.
	Insulation Resistance	100MΩ min. 500V DC	
	Withstand Voltage	500V AC for 1 minute	350 V AC for 1 minut
	There No Load	5,000 Cycles	35000 Cycles
	Rated Load	3,500 Cycles	2,500 Cycles
	Storage temp.	-35℃~+85℃(Operating Temp:)	

側向導入 LATERAL

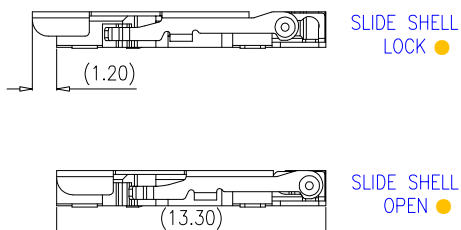
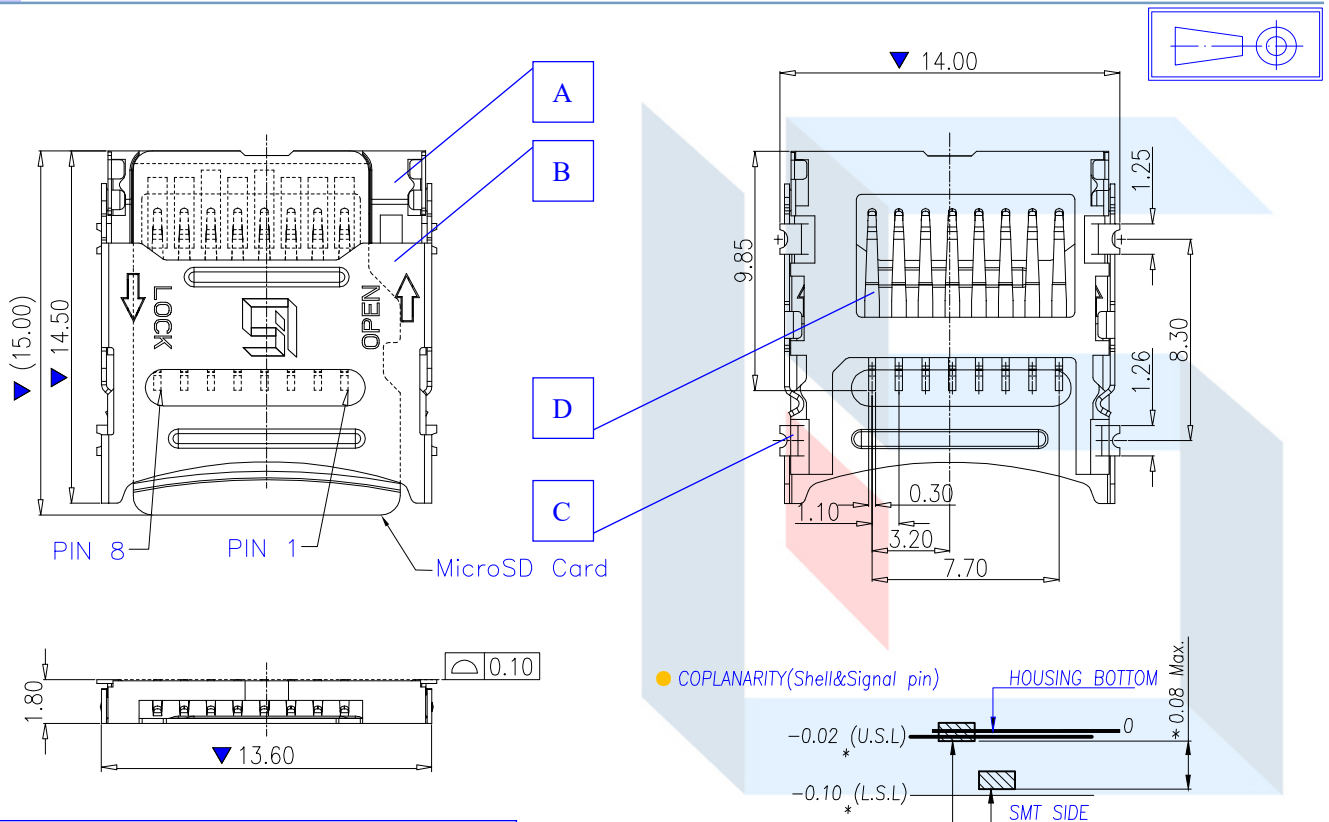
精密部品 NICETY

可靠 STABILIZE

適合環保 RoHS

Page1

Unit:mm



NAME	MATERIAL
A HOUSING 基座	LCP E475 30% (Black)耐热塑胶 UL94V-0
B SHELL 外壳	SUS301-3/4H(t=0.20mm)不锈钢【焊点镀金 1u"】
C HINGE 铰链	C5191R-H (t=0.15mm)磷青铜【锡 30u" 基镀金 1u"】
D CONTACT 接触端子	C5191R-H (t=0.15mm)磷青铜【锡 30u" 基镀金 1u"】

单击下面可查看定价，库存，交付和生命周期等信息

[>>SOFNG\(硕方\)](#)